

Cable Protection

1998

KOREA project (COPS)

a world first in submarine cable protection using steel fibre reinforced grouted mattresses

PROJECT SUMMARY :

Area / Period :

Far East - February to August 1997

Project :

Protection of a 300 MW power link in water max depth 35 m.

LD TRAVOCEAN SCOPE OF WORK :

(in cooperation with COFLEXIP STENA OFFSHORE) Protection of 48 km power cable, previously buried at 0.5 m, with an additional protection cover against vertical impact aggression. Such protection is capable of withstanding the impact of a 600 kg steel pole falling in water from 35 m height.

METHOD : (COFLEXIP concept)

Deployment of mattress form work (600 m/unit - 2 m wide - 0.25 m thick) over the cable with subsea vehicle. Simultaneous filling of mattress form work by injection of cement grout with steel fibres.

LD TRAVOCEAN SCOPE OF SUPPLY :

Design, build, test and operate the 15.9 tons crawling vehicle " COPS " for remote deployment of mattress form work.

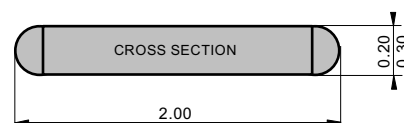
Develop and operate continuous logistic support for on-site delivery of :

- dry cement (37 000 tons)
- fresh water (15 000 tons)
- metallic fibres (800 tons)
- mattress reels (90)

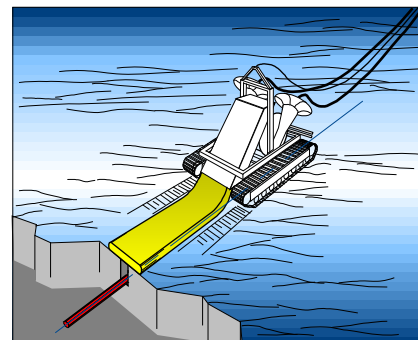
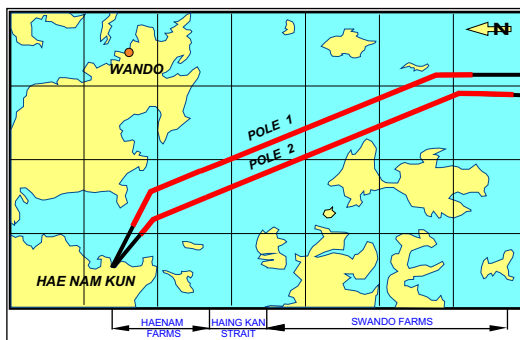
Marine means :

- 1 DSV (offshore operation)
- 1 barge (shallow water operation)
- Logistics : 1 bulk carrier as floating logistic base, 1 feeder vessel.

STANDARD MATTRESS FOR VERTICAL IMPACT PROTECTION



Thickness	Width	Submerged linear weight
0.20 m	2.00 m	360 kg / m
0.30 m		540 kg / m



Etablissement de Marseille

Les Docks Atrium 10-4
10, place de la Joliette - B.P. 64344
13567 Marseille Cedex 02 FRANCE

Tel. +33 (0)4 91 04 42 00

Fax. +33 (0)4 91 33 85 05

E-mail: ldtravocean@ldtravocean.com