

Power Cable Link

2003

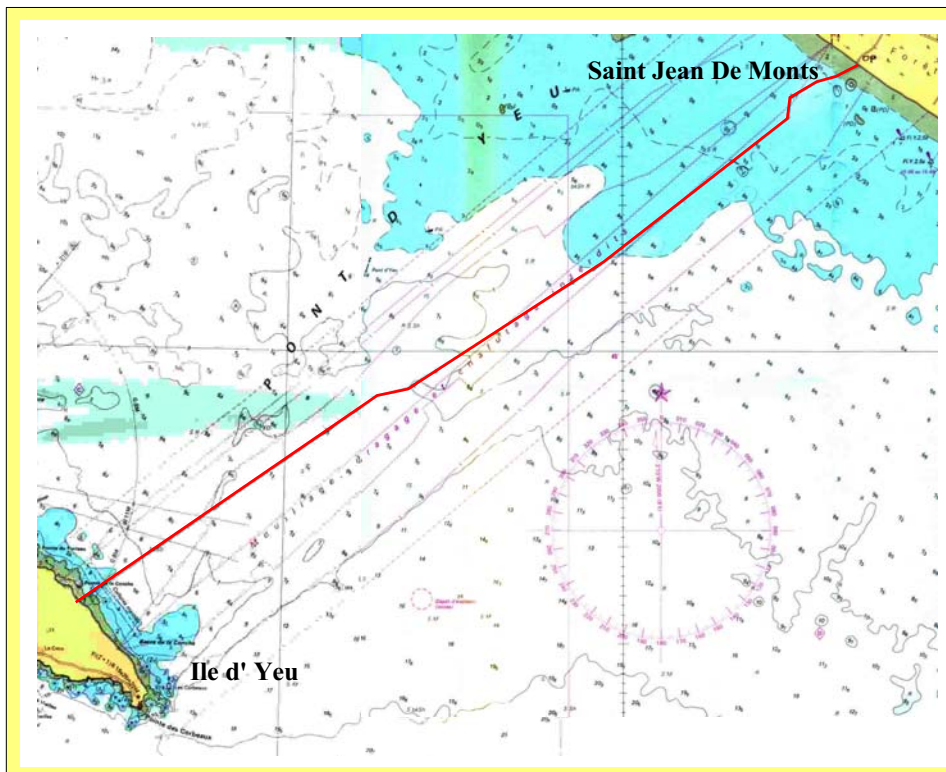
Ile d' Yeu 20 kV Submarine Cable

The purpose of this operation was to surface lay on 18 km a 20 kV power cable between Saint Jean-de-Monts (France Main Land) and Yeu Island for EDF-GDF Services, in water depth lower than 10 m.

For this operation, LD TRAVOCEAN has used a specific cable laying spread :

- shallow water barge FETSY-L
- Anchor Handling Tug Multicat
- one additional tug

This operation was done in 4 days during September 2003.



**Etablissement
de
Marseille**

Les Docks Atrium 10-4
10, place de la Joliette - B.P. 64344
13567 Marseille Cedex 02 FRANCE

Tel. +33 (0)4 91 04 42 00
Fax. +33 (0)4 91 33 85 05
E-mail: ldtravocean@ldtravocean.com