

## Laying & Burial

2015

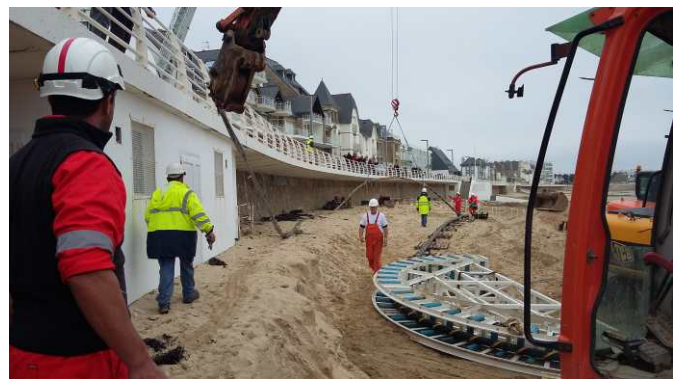
### Quiberon-Belle-île project ( power cable and fibre-optic )

LOUIS DREYFUS TRAVOCEAN was awarded by ERDF the cable installation of a power cable between Belle-île and Quiberon. For the provision of the contracted services, LOUIS DREYFUS TRAVOCEAN utilized the DP2 vessel «Vos Sympathy». The vessel was mobilized in LOUIS DREYFUS TRAVOCEAN facilities in Dunkirk, cable loading was completed in Nordenham (Germany) followed by the installation of the 15km of cable between Port Maria on the mainland and Port Jean.

Echoscope has been used to monitor the touchdown of the cable on the seabed. Using the sonar, the operator was able to visualise in real time the cable's catenary and touchdown point in three dimensions as it was being laid

All of the operations were completed successfully and on schedule.

Schedule : February / March 2015



### Submarine Cable Installation

Etablissement de Marseille

Le Mistral C - Z.A. Athélia IV  
375, avenue du Mistral - CS 60136  
13703 La Ciotat Cedex ( France )

Tel. +33 (0)4 42 18 34 00  
Fax. +33 (0)4 42 70 46 64  
E-mail: [ldtravocean@ldtravocean.com](mailto:ldtravocean@ldtravocean.com)